

# 通天閣

TSUTENKAKU TOWER

# 見て〜!

Watch〜! You don't know〜?

# 知らんの〜?

MISHIRAN GUIDE

TSUTENKAKU MISHIRAN GUIDE



Little Billiken

## 1F TSUTENKAKU's First-ever Ceiling Mural

First, go down to the basement floor connecting to WAKUWAKU LAND!!

To get to the TSUTENKAKU Observation Platform entrance, take either the stairs or the observation elevator to WAKUWAKU LAND on the Basement Floor! You are about to have a fascinating observation experience!



Coin Locker Room

Come on!



TSUTENKAKU's first-ever ceiling mural has been recreated with the completion of seismic isolation renovations!!

As part of "NEXT 210 (Two-Ten)" initiatives for our future in 210 years, the four supporting pillars of TSUTENKAKU TOWER have been fitted with seismic isolation rubber to improve earthquake resistance. At the same time the renovation work was carried out, this mural ceiling was recreated. The mural is also illuminated at nighttime.

Nighttime Illumination

# Welcome to TSUTENKAKU TOWER!

"TSUTENKAKU, the symbol of Naniwa" towers over the town of Shinsekai, Osaka. Not just the exterior, but every corner inside the tower has been remodeled. Now it's the hottest spot around, offering excitement every day. Filled with thrills and laughter, enjoy the top of TSUTENKAKU TOWER over and over again.

Have a great time!



## B1F WAKUWAKU LAND

Bringing together antenna shops of major Kansai region food manufacturers, TSUTENKAKU WAKUWAKU LAND has opened, and is being met with resounding popularity every day! What is more, you pass through WAKUWAKU LAND to get to the counter to buy tickets for the TSUTENKAKU Observation Platform. If there is a waiting time for your entry to the Observation Platform, you can watch and enjoy performances at STUDIO 210 while you wait!



You can also go to the Golden Observation Platform on the 5th Floor first, but don't forget to visit WAKUWAKU LAND on your way out!

Pâtissier Kyoro-chan Kapusuke Hiyoko-chan

STUDIO210

Observation Platform Ticket Counter



Kyoro-chan's LOL Lolly Shop

Glico-ya

Chicken Ramen Hiyoko-chan Shop

You mustn't miss even the smallest jokes!



There are lots more, so keep your eyes open!!

You gotta try!!

Comes with TSUTENKAKU paper craft figures

On the 2nd Floor you can get yourself an Official Guide!



\*Designs shown may differ from figure designs currently available.

## 2F Underfloor (Observation Elevator Hall)

"Muscle Man Project" Archives Corner



A must-see for the "Muscle Man" generation! Relive the excitement of the adventures of this hero for justice!

Packed with male romance, this "Archives Corner" displays records and materials of the "Muscle Man Project", which is a "Shinsekai 100th Year Anniversary Project".

Silver mask/Gold mask

"Robin Mask" masks

Displays of "Muscle Man" reproductions



Keep it up!!

Passageway to trains



Get off the tubular elevator here and proceed to the observation elevator.

Billiken's "Mouth of Truth"



Capsule Toy Corner



What will come out? How exciting!

The Observation Elevator passageway is lined with a startling number of capsule vending machines! Even just looking at all these toys, you'll never get bored!

Official Shops



Lots of interesting souvenirs!



Billiken Gate



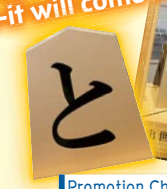
TSUTENKAKU o-mikuji fortune slips

JAN JAN TOWN



JAN JAN TOWN hilariously recreates the Shinsekai of days gone by.

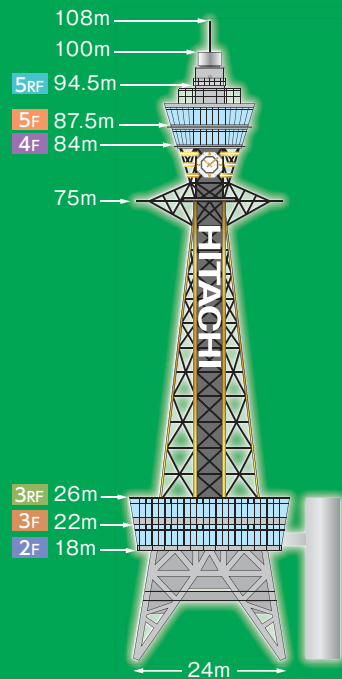
Rub the chess piece as you make a wish-it will come true!



Promotion Chess Piece

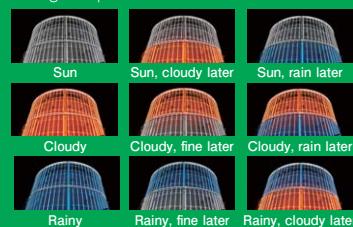
1 Welcome to TSUTENKAKU TOWER! 2F B1F 1F

# TSUTENKAKU TOWER DATA



## Know tomorrow's weather by the light

Shining in the night sky, the round sign at the very top of TSUTENKAKU TOWER connects the tower with a meteorological observatory and lets everyone know the weather for the following day through simple color combinations.



## Twelve patterns altogether! Grand Clock and illumination variations

Since full-scale renovations in 2017, the tower now lights up in an amazing 12 color patterns! The Grand Clock was also changed from analog to LED version. Reproducing six different historical clock faces, the clock can now also display seasonal images (snow, cherry blossoms, clovers, sunflowers, autumn leaves, stars).

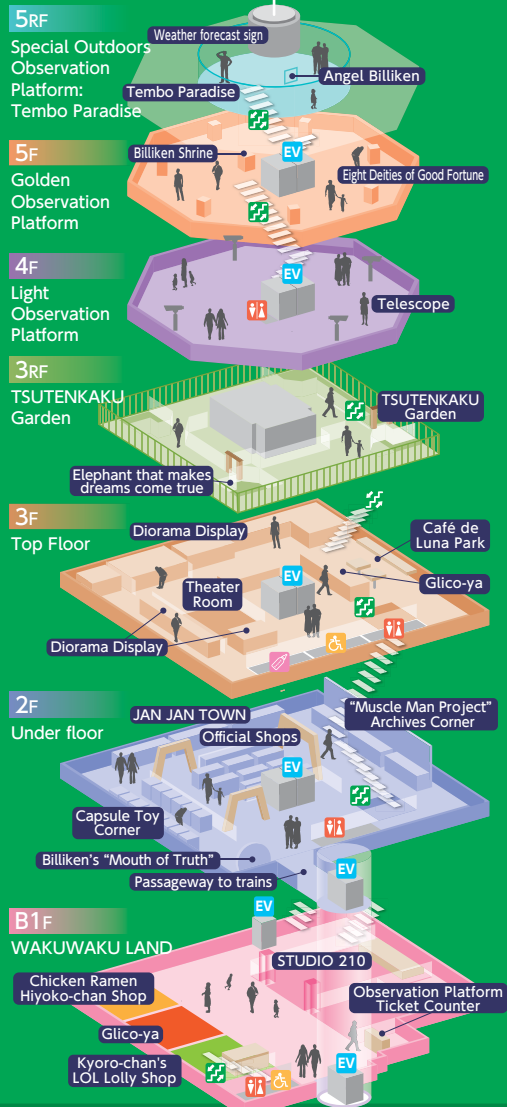


### Time from closest train station

- Approx. 7 minutes' walk from Shin-Imamiya Station on the JR Osaka Loop Line
- Approx. 4 minutes' walk from Ebisucho Station on the Osaka Metro Sakaisuji Line
- Approx. 7 minutes' walk from Dobutsuen-mae Station on the Osaka Metro Midosuji Line
- Approx. 3 minutes' walk from Ebisucho Station on the Osaka Municipal Subway/Hankai Tramway
- Approx. 10 minutes' walk from Shin-Imamiya Station on the Nankai Main Line

### Tsutenkaku Kanko Co., Ltd.

1-18-6 Ebisu-higashi, Naniwa-ku, Osaka City, Japan 556-0002 TEL:06-6641-9555 FAX:06-6641-9559 [Operating Hours] 8:30 a.m. to 9:30 p.m. (Last admission 9:00 p.m.) ●Open all year round



2 Increase Your Good Luck with Power Spots! 5F 4F 3F

# These are Naniwa's Power Spots!!

At TSUTENKAKU TOWER, you can enjoy magnificent views while visiting the Eight Deities of Good Fortune on the Golden Observation Platform. Here you can also enjoy exhibition, cafés, and shopping while receiving many blessings. Yes, this is the "Naniwa's Power Spot", known by people in the know. Bring along your special someone and boost your good fortune together! UP! UP!

## Finally! The Golden Observation Platform!!

Take the tubular elevator from TSUTENKAKU WAKUWAKU LAND to the Underfloor. The first thing you'll see is the passageway decorated like the inside of a Hankai Tram carriage from the days when the tramway first began operating. Proceed along the passageway past Billiken's "Mouth of Truth" and Jan Jan TOWN to the observation elevator to the 5th Floor.

Luck increased!!



Billiken-san is also inside the observation elevator to the Observation Platform!

## 4F Light Observation Platform

For some reason, Osaka-ites love "sparkly" things. At nighttime, the Light Observation Platform on the 4th Floor transforms into an exiting "Disco-Fever" observation platform with colorful lighting and mirror balls. How about enthusiastically sharing your and everyone's hopes for an invigorated Osaka here on this spectacular observation platform!



Enjoy various lighting patterns!!

Completely refurbished!



## 3F Top Floor



### Hang on! Now we're suddenly travelling 100 years back in time!?

Not to be outdone by museums, this permanent exhibition has lots to see! Here you will find displays of dioramas, videos, and photographs of Shinsekai, TSUTENKAKU, and Luna Park for around 100 years ago (Luna Park closed in 1912).



### Glico-ya



There is also a Glico WAKUWAKU spot on the Top Floor. Check out the exhibit showing the history of Pocky chocolate and the photo spots.

### Café de Luna Park



At the Café de Luna Park (presented by Mother Farm), you can relax and savor the view while enjoying a diverse menu of delights such as Tsutenkaku Parfaits, and famous Osaka mixed juices.

## 5F Golden Observation Platform

The 3rd-generation Biliken-san is a handsome blond guy!

Celebrating the Shinsekai 100th Year Anniversary, Biliken III ascended the throne in the Billiken Shrine on the topmost floor of the TSUTENKAKU TOWER.

Visit the Eight Deities of Good Fortune

Combining Billiken-san and the Seven Deities of Good Fortune, these are the most powerful Eight Deities of Good Fortune possible!

Billiken-san, the Deity of Good Fortune who will grant any wish—business prosperity, examination success, happy marriage, etc.—has been joined by the Seven Deities of Good Fortune, so you can now visit the most powerful Eight Deities of Good Fortune possible!



What should I wish for?

Everything is gilded and shiny!!



BILIKEN THINGS AS THEY

## 5RF Special Outdoors Observation Platform: Tembo Paradise (additional fee: 500 yen)



After checking in at the Information Counter on the 5th Floor (additional fee: 500 yen), climb the stairs to the outdoor viewing platform. Feel the true winds of the four seasons as you enjoy the thrilling and inspiring views!

Weekdays: 10:00 a.m. to 6:00 p.m. (Last admission 5:45 p.m.)  
Weekends/public holidays: 10:00 a.m. to 8:00 p.m. (Last admission 7:45 p.m.)

## 3RF TSUTENKAKU Garden (26m above the ground)

Now open on the Top Floor roof!!

Admission free



On the Top Floor, there is a staircase leading to the roof of the 3rd Floor. Climb the stairs and find yourself in the Japanese-modern style TSUTENKAKU Garden. Created by Takasho Corporation, this garden was designed on the theme of "Wind, Light, Water, Greenery, and Heart." Elements such as shishiodoshi (water-filled bamboo pipe that clacks against a stone as it empties) have been incorporated into the design, and artificial bamboo fences and greenery have been used. At night, the garden is beautifully illuminated by LED lighting.



Here's Ganesha, the elephant that makes wishes come true!

